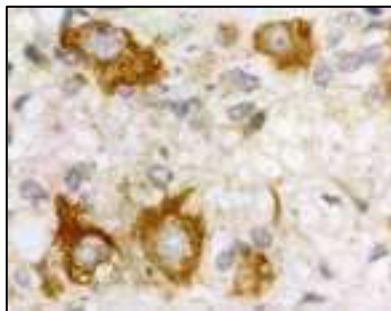

**Rabbit anti-Human Pituitary Adenylate Cyclase Activating Polypeptide
Type 1 Receptor (PAC1, PACAP) (AA 506-525) (CT)**
#Cat: NB-49-014-50ul Size: 50ul

| | |
|----------------------------------|--|
| Product Description: | PAC1 antibody, human, C-term. PACAP type 1 receptor Pituitary adenylate cyclase activating polypeptide type 1 receptor G Protein-coupled receptor Polyclonal antibody raised against the C-terminus of the human PAC1 receptor |
| Immunogen: | residues 506-525 coupled to KLH (BAA04466) KLH- LSKSSSQIRMSGLPADNLAT |
| Host: | Rabbit |
| Form: | serum with 0.02% NaN ₃ as preservative |
| Quantity: | 50 µl |
| Applications: | ICH (p), IC, W W = Western blot (1:5000) IC = Immunocytochemistry (1:5000) ICH (p) = Immunohistochemistry of formalin-fixed, paraffin-embedded tissues (1:2500) |
| Species cross-reactivity: | human |
| Sensitivity: | 50 ng |
| Storage: | 4°C short term -20°C long term |



PAC1 receptor immunoreactivity in myenteric ganglia.