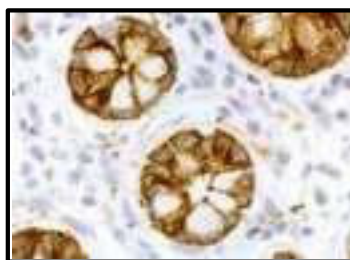


## Rabbit anti-Human Vasoactive Intestinal Peptide Receptor-1 (VIPR1/VPAC1) (AA 438-457) (CT)

#Cat: NB-49-012-50ul

Size: 50ul

<b>Product Description:</b>	VPAC1 antibody, human, C-term. VIPR1 Vasoactive intestinal peptide receptor 1 G Protein-coupled receptor Polyclonal antibody raised against the C-terminus of the human VPAC1 receptor
<b>Immunogen:</b>	residues 438-457 coupled to KLH (NP_004615) KLH- TRVSPGARRSSSFQAEVSLV
<b>Host:</b>	Rabbit
<b>Form:</b>	serum with 0.02% NaN <sub>3</sub> as preservative
<b>Quantity:</b>	50 µl
<b>Applications:</b>	ICH (p), IC, W W = Western blot (1:5000) IC = Immunocytochemistry (1:5000) ICH (p) = Immunohistochemistry of formalin-fixed, paraffin- embedded tissues (1:2500)
<b>Species cross-reactivity:</b>	human
<b>Sensitivity:</b>	50 ng
<b>Storage:</b>	4° C short term -20° C long term



VPAC1 receptor immunoreactivity in mucosa of human small intestine.