

## Anti-Phospho-H2AX-Ser139 antibody (94-143 aa)

#Cat: NB-22-0288-20	Size: 20ug
#Cat: NB-22-0288-50	Size: 50ug
#Cat: NB-22-0288-100	Size: 100ug
#Cat: NB-22-0288-200	Size: 200ug

### General Information

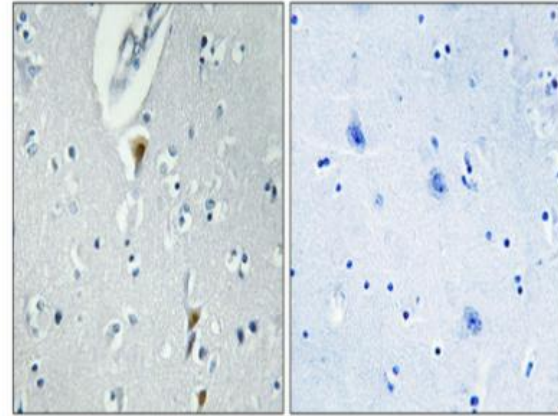
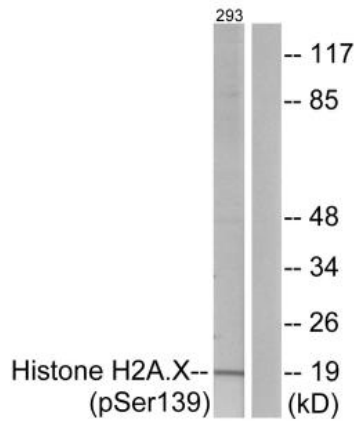
<b>Product Type</b>	Primary antibodies
<b>Short Description</b>	Rabbit polyclonal antibody anti-Phospho-Histone H2AX-Ser139 (94-143 aa) is suitable for use in Western Blot, Immunohistochemistry, Immunofluorescence and ELISA research applications.
<b>Application</b>	WB/IHC/IF/ELISA
<b>Host/Source</b>	Rabbit
<b>Reactivity</b>	Human/Mouse/Rat/Hamster

### Product Properties

<b>Clonality</b>	Polyclonal
<b>Clone ID</b>	
<b>Concentration</b>	1 mg/mL
<b>Conjugation</b>	Unconjugated
<b>Purification</b>	The antibody was affinity-purified from rabbit antiserum by affinity-chromatography using epitope-specific immunogen.
<b>Dilution Range</b>	WB 1:500-1:2000 IHC 1:100-1:300 ELISA 1:10000 IF 1:50-200 ;
<b>Formulation</b>	Liquid in PBS containing 50% Glycerol, 0.5% BSA and 0.02% Sodium Azide.
<b>Isotype</b>	IgG
<b>Storage Instruction</b>	Store at -20°C for up to 1 year from the date of receipt, and avoid repeat freeze-thaw cycles.

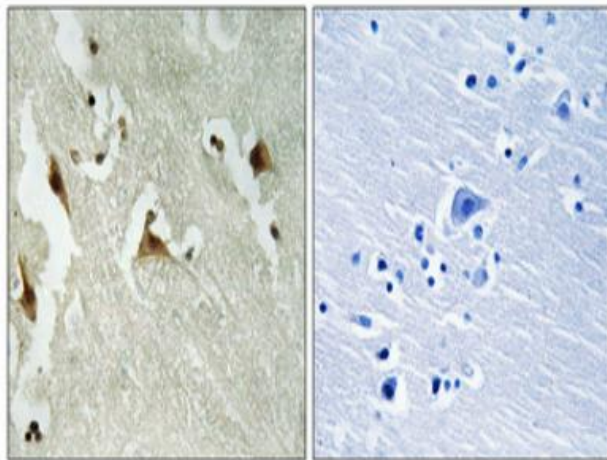
### Target Information

<b>Gene ID</b>	<a href="#">3014</a>
<b>Gene Symbol</b>	<a href="#">H2AX</a>
<b>Uniprot ID</b>	<a href="#">H2AX_HUMAN</a>
<b>Immunogen</b>	The antiserum was produced against synthesized peptide derived from the human Histone H2A.X around the phosphorylation site of Ser139 at the amino acid range 94-143
<b>Immunogen Region</b>	94-143 aa
<b>Specificity</b>	Phospho-Histone H2A.X (S139) Polyclonal Antibody detects endogenous levels of Histone H2A.X protein only when phosphorylated at S139.
<b>Immunogen Sequence</b>	

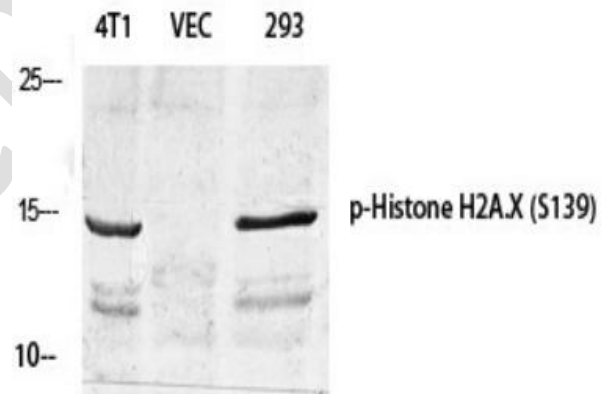


Western blot analysis of lysates from 293 cells treated with heat shock, using Histone H2A.X (PhosphoSer139) Antibody. The lane on the right is blocked with the phospho peptide.

Immunohistochemical analysis of paraffin-embedded Human brain. Antibody was diluted at 1:100 (4°C overnight). High-pressure and temperature Tris-EDTA, pH8.0 was used for antigen retrieval. Negative control (right) obtained from antibody was pre-absorbed by immunogen peptide.



Immunohistochemical analysis of paraffin-embedded Human brain. Antibody was diluted at 1:100 (4°C overnight). High-pressure and temperature Tris-EDTA, pH8.0 was used for antigen retrieval. Negative control (right) obtained from antibody was pre-absorbed by immunogen peptide.



Western blot analysis of various cells using PhosphoHistone H2A.X (S139) Polyclonal Antibody diluted at 1:500 cells nucleus extracted by Minute TM Cytoplasmic and Nuclear Fractionation kit (SC-003, Inventbiotech, MN, USA).

**This product is suitable for in-vitro studies under the RESEARCH USE ONLY [RUO] licence.**  
This product must not be used as for diagnostic or other medical purposes.