



IgM Chain C rabbit pAb

NB-66-15989-50 μ L

IgM Chain C rabbit pAb

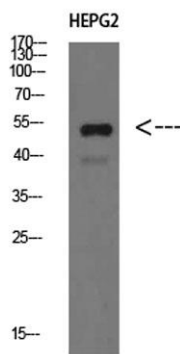
Cat No.:NB-66-15989-50μL

For research use only

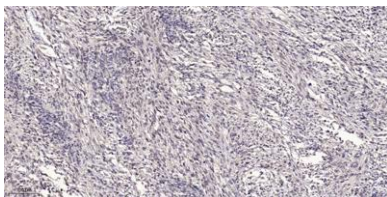
Overview

| | |
|---------------------------------|---|
| Product Name | IgM Chain C rabbit pAb |
| Host species | Rabbit |
| Applications | WB;IHC;IF;ELISA |
| Species Cross-Reactivity | Human;Mouse;Rat |
| Recommended dilutions | IHC-p: 100-300.WB 1:500-2000, ELISA 1:10000-20000 |
| Immunogen | Synthesized peptide derived from IgM Chain C at AA range: 391-440 |
| Specificity | IgM Chain C Polyclonal Antibody detects endogenous levels of IgM Chain C |
| Formulation | Liquid in PBS containing 50% glycerol, 0.5% BSA and 0.02% sodium azide. |
| Storage | Store at -20°C. Avoid repeated freeze-thaw cycles. |
| Protein Name | IgM Chain C |
| Gene Name | IGHM |
| Cellular localization | [Isoform 1]: Secreted. During differentiation, B-lymphocytes switch from expression of membrane-bound IgM to secretion of IgM.; [Isoform 2]: Cell membrane; Single-pass type I membrane protein. |
| Purification | The antibody was affinity-purified from rabbit antiserum by affinity-chromatography using epitope-specific immunogen. |
| Clonality | Polyclonal |
| Concentration | 1 mg/ml |
| Observed band | 50kD |
| Human Gene ID | |
| Human Swiss-Prot Number | P01871 |
| Alternative Names | Ig mu chain C region |
| Background | Immunoglobulins (Ig) are the antigen recognition molecules of B cells. An Ig molecule is made up of 2 identical heavy chains and 2 identical light chains (see MIM 147200) joined by disulfide bonds so that |

each heavy chain is linked to a light chain and the 2 heavy chains are linked together. Each Ig heavy chain has an N-terminal variable (V) region containing the antigen-binding site and a C-terminal constant (C) region, encoded by an individual C region gene, that determines the isotype of the antibody and provides effector or signaling functions. The heavy chain V region is encoded by 1 each of 3 types of genes: V genes (see MIM 147070), joining (J) genes (see MIM 147010), and diversity (D) genes (see MIM 146910). The C region genes are clustered downstream of the V region genes within the heavy chain locus on chromosome 14. The IGHM gene encodes the C region of the mu heavy chain, which d



Western Blot analysis of HEPG2 cells using IgM Chain C Polyclonal Antibody diluted at 1:500. Secondary antibody(catalog#:RS0002) was diluted at 1:20000



Immunohistochemical analysis of paraffin-embedded human small intestinal carcinoma tissue. 1,primary Antibody was diluted at 1:200(4° overnight). 2, Sodium citrate pH 6.0 was used for antigen retrieval(>98°C,20min). 3,Secondary antibody was diluted at 1:2