



SMRTe rabbit pAb

NB-66-15157-50 μ L

SMRTE rabbit pAb

Cat No.:NB-66-15157-50 μ L

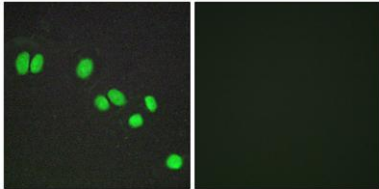
For research use only

Overview

Product Name	SMRTE rabbit pAb
Host species	Rabbit
Applications	IHC;IF;WB;ELISA
Species Cross-Reactivity	Human;Rat;Mouse;
Recommended dilutions	WB 1:500-2000 Immunohistochemistry: 1/100 - 1/300. Immunofluorescence: 1/200 - 1/1000. ELISA: 1/20000. Not yet tested in other applications.
Immunogen	The antiserum was produced against synthesized peptide derived from human NCOR2. AA range:511-560
Specificity	SMRTE Polyclonal Antibody detects endogenous levels of SMRTE protein.
Formulation	Liquid in PBS containing 50% glycerol, 0.5% BSA and 0.02% sodium azide.
Storage	Store at -20°C. Avoid repeated freeze-thaw cycles.
Protein Name	Nuclear receptor corepressor 2
Gene Name	NCOR2
Cellular localization	Nucleus.
Purification	The antibody was affinity-purified from rabbit antiserum by affinity-chromatography using epitope-specific immunogen.
Clonality	Polyclonal
Concentration	1 mg/ml
Observed band	270kD
Human Gene ID	9612
Human Swiss-Prot Number	Q9Y618
Alternative Names	NCOR2; CTG26; Nuclear receptor corepressor 2; N-CoR2; CTG repeat protein 26; SMAP270; Silencing mediator of retinoic acid and thyroid hormone receptor; SMRT; T3 receptor-associating factor; TRAC; Thyroid-; retinoic-acid-receptor-associated
Background	This gene encodes a nuclear receptor co-repressor that mediates transcriptional silencing of certain

target genes. The encoded protein is a member of a family of thyroid hormone- and retinoic acid receptor-associated co-repressors. This protein acts as part of a multisubunit complex which includes histone deacetylases to modify chromatin structure that prevents basal transcriptional activity of target genes. Aberrant expression of this gene is associated with certain cancers. Alternate splicing results in multiple transcript variants encoding different isoforms.[provided by RefSeq, Apr 2011],

Immunofluorescence analysis of A549 cells, using NCOR2 Antibody. The picture on the right is blocked with the synthesized peptide.



Immunohistochemistry analysis of paraffin-embedded human brain tissue, using NCOR2 Antibody. The picture on the right is blocked with the synthesized peptide.

