



ETBR rabbit pAb

NB-66-16013-100 $\mu$ L

## ETBR rabbit pAb

Cat No.:NB-66-16013-100µL

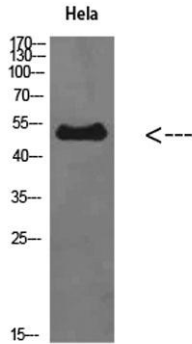
For research use only

### Overview

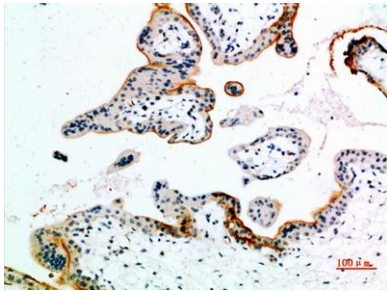
---

<b>Product Name</b>	ETBR rabbit pAb
<b>Host species</b>	Rabbit
<b>Applications</b>	WB;IHC;IF;ELISA
<b>Species Cross-Reactivity</b>	Human;Rat;Mouse;
<b>Recommended dilutions</b>	IHC-p: 100-300.WB 1:500-2000, ELISA 1:10000-20000
<b>Immunogen</b>	Synthesized peptide derived from ETBR at AA range: 31-80
<b>Specificity</b>	ETBR Polyclonal Antibody detects endogenous levels of ETBR
<b>Formulation</b>	Liquid in PBS containing 50% glycerol, 0.5% BSA and 0.02% sodium azide.
<b>Storage</b>	Store at -20°C. Avoid repeated freeze-thaw cycles.
<b>Protein Name</b>	ETBR
<b>Gene Name</b>	EDNRB
<b>Cellular localization</b>	Cell membrane ; Multi-pass membrane protein. internalized after activation by endothelins. .
<b>Purification</b>	The antibody was affinity-purified from rabbit antiserum by affinity-chromatography using epitope-specific immunogen.
<b>Clonality</b>	Polyclonal
<b>Concentration</b>	1 mg/ml
<b>Observed band</b>	50kD
<b>Human Gene ID</b>	1910
<b>Human Swiss-Prot Number</b>	P24530
<b>Alternative Names</b>	Endothelin B receptor (ET-B;ET-BR;Endothelin receptor non-selective type)
<b>Background</b>	The protein encoded by this gene is a G protein-coupled receptor which activates a phosphatidylinositol-calcium second messenger system. Its ligand, endothelin, consists of a family of three potent vasoactive peptides: ET1, ET2, and ET3. Studies suggest that the multigenic disorder,

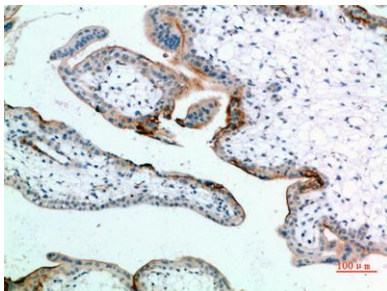
Hirschsprung disease type 2, is due to mutations in the endothelin receptor type B gene. Alternative splicing and the use of alternative promoters results in multiple transcript variants. [provided by RefSeq, Oct 2016],



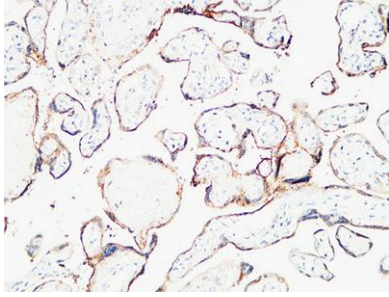
Western Blot analysis of HeLa cells using ETBR Polyclonal Antibody diluted at 1:500. Secondary antibody(catalog#:RS0002) was diluted at 1:20000



Immunohistochemical analysis of paraffin-embedded human-placenta, antibody was diluted at 1:200



Immunohistochemical analysis of paraffin-embedded human-placenta, antibody was diluted at 1:200



Immunohistochemical analysis of paraffin-embedded Human placenta. 1, Antibody was diluted at 1:200(4° overnight). 2, High-pressure and temperature EDTA, pH8.0 was used for antigen retrieval. 3,Secondary antibody was diluted at 1:200(room temperature, 30min).