

Anti-Actin antibody (300-380 C-Term)

#Cat: NB-22-1460	Size: 100µg
#Cat: NB-22-1460-50	Size: 50µg
#Cat: NB-22-1460-20	Size: 20µg
#Cat: NB-22-1460-200	Size: 200µg

General Information

Product Type	Primary antibodies
Short Description	Rabbit polyclonal antibody anti-Actin, cytoplasmic 1 and Putative beta-actin-like protein 3 and Actin, cytoplasmic 2 (300-380 C-Term) is suitable for use in Western Blot, Immunohistochemistry, Immunofluorescence and ELISA research applications.
Applications	WB, IHC-P, IF-P, ELISA
Host/Source	Rabbit
Reactivity	Human, Mouse, Rat

Product Properties

Clonality	Polyclonal
Clone ID	
Concentration	1 mg/ml
Conjugation	Unconjugated
Purification	The antibody was affinity-purified from rabbit anti-serum by affinity-chromatography.
Dilution Range	WB 1:500-1:2000 IHC 1:100-1:300 ELISA 1:10000
Formulation	PBS, 50% Glycerol, 0.5% BSA and 0.02% Sodium Azide.
Isotype	IgG
Storage Instruction	Store at -20°C for up to 1 year from the date of receipt, and avoid repeat freeze-thaw cycles.

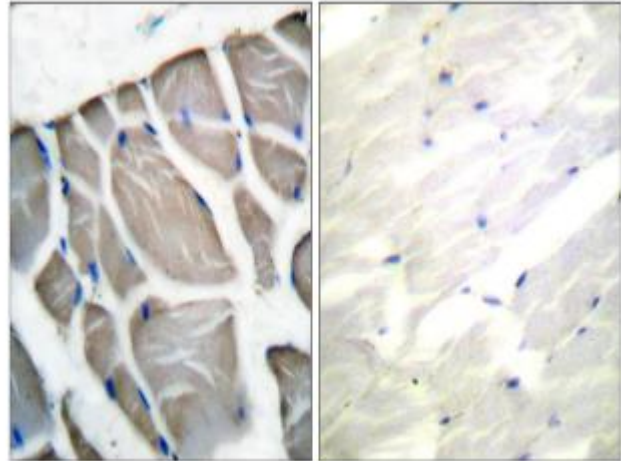
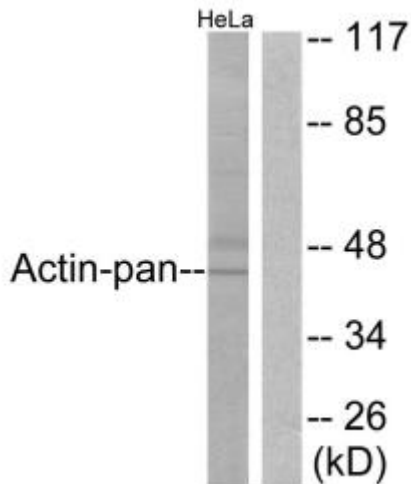
Target Information

Gene ID	NA 71 60 POTEKP ACTG1 ACTBM HUMAN ACTG HUMAN ACTB HUMAN
Immunogen	The antiserum was produced against synthesized peptide derived from human Actin at amino acid range 326-375
Immunogen Region	300-380 C-Term

Specificity

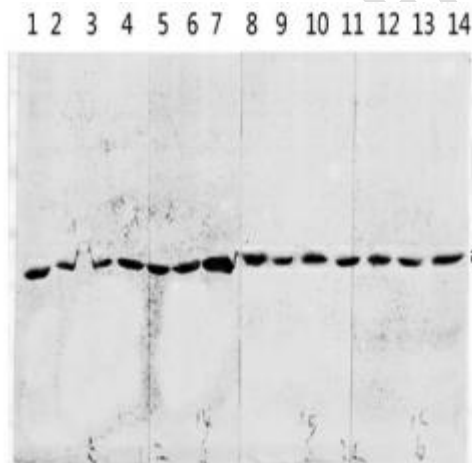
Actin polyclonal antibody (Actin, cytoplasmic 1 and Putative beta-actin-like protein 3 and Actin, cytoplasmic 2) binds to endogenous Actin, cytoplasmic 1 and Putative beta-actin-like protein 3 and Actin, cytoplasmic 2 at the amino acid region 300-380

Immunogen Sequence

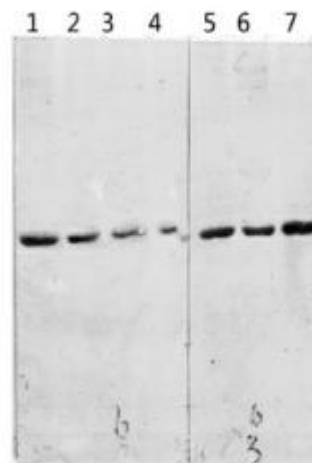


Western blot analysis of lysates from HeLa cells, using Actin-pan Antibody. The lane on the right is blocked with the synthesized peptide.

Immunohistochemistry analysis of paraffin-embedded human skeletal muscle tissue, using Actin-pan Antibody. The picture on the right is blocked with the synthesized peptide.



1 mouse-lung
2 mouse-brain
3 mouse-spleen
4 mouse-kidney
5 mouse-heart
6 293T
7 HeLa
8 K562
9 KB
10 SH-SY5Y
11 mouse-liver
12 3T3
13 A549
14 VEC



1 MCF-7
2 U2OS
3 HeLa UV
4 MCF-7 UV
5 3T3 UV
6 KB UV
7 U2OS UV

Western blot analysis of various lysis using Actin Polyclonal Antibody diluted at 1 : 2000. Secondary antibody was diluted at 1:20000

Western blot analysis of various lysis using Actin Polyclonal Antibody diluted at 1 : 2000. Secondary antibody was diluted at 1:20000

This product is suitable for in-vitro studies under the RESEARCH USE ONLY [RUO] licence. This product must not be used as for diagnostic or other medical purposes.