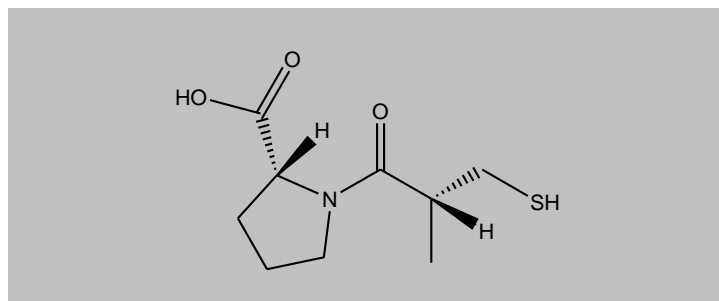


Captopril

Cat # NB-48-0227



Product Information

Batch No.:	0126BG/01
Chemical Name:	<i>N</i> -[(<i>S</i>)-3-Mercapto-2-methylpropionyl]- <i>L</i> -proline
Batch Molecular Formula:	C ₉ H ₁₅ NO ₃ S
Batch Molecular Weight:	217.29
CAS No.:	[62571-86-2]
Physical Appearance:	White to off-white crystalline powder
Melting Point:	108 - 108.5° C
Storage:	RT

Solvent and solubility

Soluble in water

Biological activity

ACE inhibitor. Inhibits the formation of Angiotensin II, a bioactive peptide that stimulates angiogenesis and increases microvessel density. Antihypertensive agent.

References

1. Greene and Amaral (2002) *Hypertens Rep* 4:56;
2. Hollenberg (2001) *Am J Hypertens* 14:237S

- CAUTION - Not fully tested. For Research use only. Not for human use. –

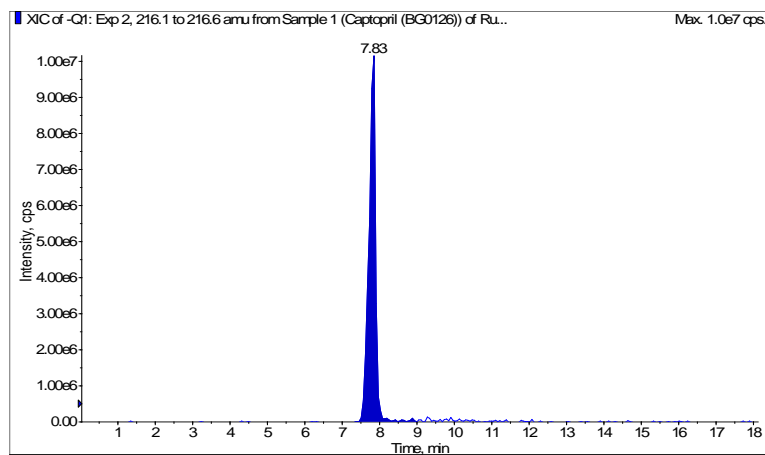
NB-48-0227 Captopril

Analytical data

HPLC: corresponds to the reference

MS: corresponds to the reference

Tests: Specific Rotation: -132° (complies); Residue on ignition: 0.03% (complies); Heavy Metals: < 30 ppm (complies); HPLC Assay: 99.4% (complies)



- CAUTION - Not fully tested. For Research use only. Not for human use. –